

# CYCLONES



## Koger Air A-B Cyclones Standard Construction

- Welded, bolted and flanged 12-gauge or heavier mild steel in inlet diameters 12" to 48"
- Design and construction minimize abrasion as system particulate is collected and separated
- Used as a pre-cleaner, the A-B cyclone separator reduces the load for the final filter
- Maximum efficiency is obtained when paired with final filter or in closed loop systems as atmospheric emissions are eliminated
- Bolted construction enables inlet position to be interchanged from clockwise to counterclockwise rotation
- Hot rolled plate construction is cleaned, primed and painted with selection of standard paint colors
- Flat top reinforced by gussets with lifting eyes

## Options

- Length and degree of cone
- Pressure relief vents
- Steel supports, service platforms and ladders
- Air outlet cap
- Size and materials including Galvanized, Abrasion Resistant Steel, Stainless, Hot Rolled Plate
- Inlet transitions
- Multiple inlets with automatic backdraft dampers
- Round or rectangular inlets
- Cone hopper to match airlock or other equipment
- Cone access doors
- Bolt-in wear plates

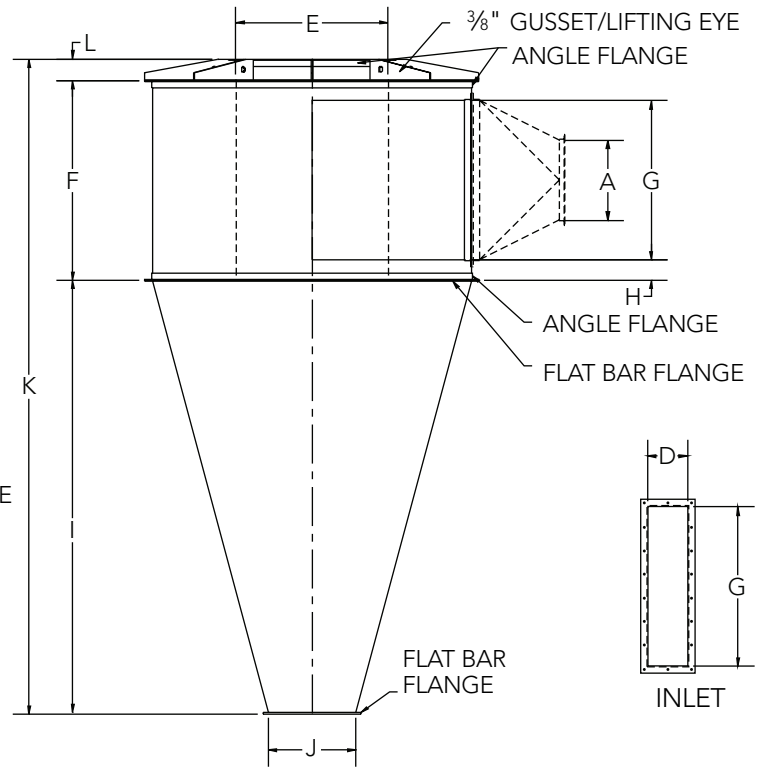
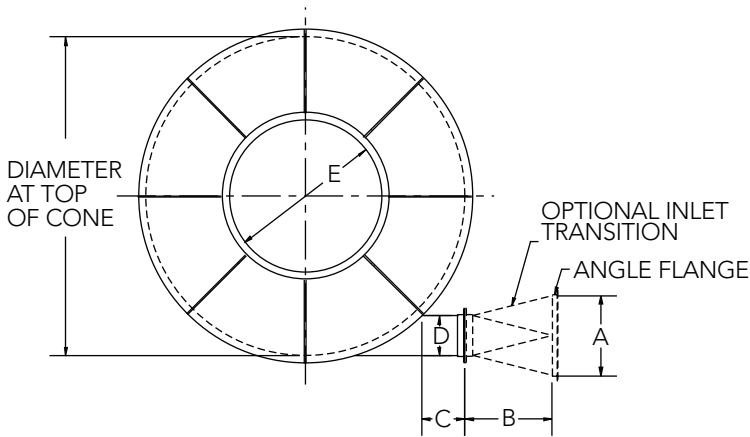
## Shipment

- Body diameters 104" and smaller are shipped in one piece
- Body diameters above 104" are shipped knocked down with flanged bodies and cones
- Average shipment 2 to 4 weeks from order, subject to work schedules and material availability

## Standard A-B Cyclone

Top View - Clockwise Rotation Shown  
Counterclockwise Rotation also Available

Specify Rotation when Ordering



Certified drawings are available upon receipt of purchase order

### Standard A-B Cyclone Separators

A Inlet Dia.	Capacity CFM@2"SP	Body Diameter	B	C	D	E	F	G	H	I	J	K	L
12	3150	48	18	12	6	22	30	24	3	45	24	80	5
14	4275	56	18	12	7	26	35	28	3.5	60	24	100 1/4	5 1/4
16	5600	64	18	12	8	30	40	32	4	75	24	120 1/2	5 1/2
18	7000	72	24	12	9	34	45	36	4.5	90	24	140 3/4	5 3/4
20	9150	80	24	12	10	38	50	40	5	105	24	161	6
22	11175	88	24	12	11	42	55	44	5.5	120	24	181 1/4	6 1/4
24	13390	96	30	12	12	46	60	48	6	135	24	201 1/2	6 1/2
26	15810	104	30	12	13	50	65	52	6.5	150	24	221 3/4	6 3/4
28	18450	112	30	12	14	54	70	56	7	164	24	241	7
30	21290	120	30	12	15	58	75	60	7.5	179	24	261 1/4	7 1/4
32	24320	128	36	12	16	62	80	64	8	194	24	281 1/2	7 1/2
34	27550	136	36	12	17	66	85	68	8.5	209	24	301 3/4	7 3/4
36	31000	144	36	12	18	70	90	72	9	224	24	322	8
38	34650	152	36	12	19	74	95	76	9.5	239	24	342 1/4	8 1/4
40	38450	160	36	12	20	78	100	80	10	254	24	342 1/2	8 1/2
42	42540	168	42	12	21	82	105	84	10.5	269	24	382 3/4	8 3/4
44	46800	176	42	12	22	86	110	88	11	283	24	402	9
46	51250	184	42	12	23	90	115	92	11.5	298	24	422 1/4	9 1/4
48	55290	192	42	12	24	94	120	96	12	313	24	442 1/2	9 1/2

- All dimensions in inches
- Weight is calculated based on size, type and thickness of material
- CFM (cubic feet per minute) @ 2" water gauge static pressure

### Applications

- Wood
- Brick
- Grain and Feed
- Agricultural
- Leather
- Rubber
- Textiles
- Pharmaceuticals
- Polymer and Plastics
- Sugar
- Foam
- Chemicals
- Minerals
- Asphalt
- Pulp and Paper
- Fly Ash
- Metal Grindings