

COMPONENT PARTS



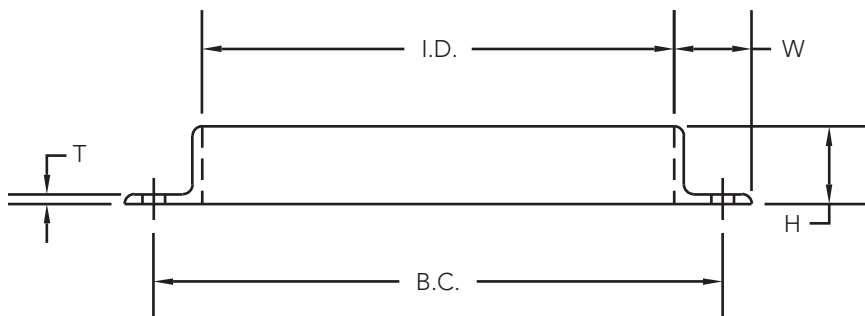
Koger offers a complete line of blowpipe component parts for sheet metal shops, contractors and resellers to use as new and existing system replacements, additions or retrofits. After our skilled craftsmen manufacture our products, using state-of-the-art machinery, standard parts are warehoused in our service center for immediate shipment upon receipt of order.

Standard Pressed Angle Rings

Inside Diameter	H	W	T	Bolt Hole Centers	No. of Bolt Holes	Size of Bolt Holes	Weight lbs.	Pieces/Bundle
3 1/16"	7/8"	1"	11 GA	4 5/16"	6	9/32"	0.70	48
4 1/16"	15/16"	1"	11 GA	5 5/16"	6	9/32"	0.85	48
5 1/16"	1"	1"	11 GA	6 5/16"	6	9/32"	1.18	24
6 3/32"	1"	1"	11 GA	7 5/16"	6	9/32"	1.38	24
7 1/8"	1"	1 1/8"	11 GA	8 1/2"	6	3/8"	1.73	12
8 1/8"	1"	1 1/8"	11 GA	9 9/16"	6	3/8"	1.90	12
9 1/8"	1 1/8"	1 1/4"	11 GA	10 5/8"	6	7/16"	2.55	12
10 1/8"	1 1/4"	1 3/8"	11 GA	11 13/16"	6	7/16"	3.05	12
11 1/8"	1 1/4"	1 1/2"	11 GA	12 3/4"	6	7/16"	3.25	12
12 1/8"	1 1/4"	1 1/2"	11 GA	14"	8	7/16"	3.88	12
13 1/8"	1 1/2"	1 1/2"	11 GA	15"	8	7/16"	4.25	24
14 1/8"	1 1/2"	1 1/2"	11 GA	16"	8	7/16"	4.75	24

Stocked in:

- HR
- Stainless Steel
- Aluminum
- Zinc plated



STANDARD PRESSED ANGLE RINGS



STANDARD ROLLED ANGLE RINGS

- Roll-formed, welded hot rolled steel.
- Sizes 10" to 60" ship today, smaller and larger sizes made to order.
- With or without holes.
- Leg-in or leg-out.
- Precise measurements to ensure an easy, tight fit.
- Flat bar rings available in sizes 14" and larger.
- Square and rectangular flanges can be fabricated in angle iron, flat bar or plate.
- Available in custom sizes and materials, including Galvanized, Stainless Steel and Aluminum.
- Precision punched.
- Hot Dipped Galvanized available 15" to 48".

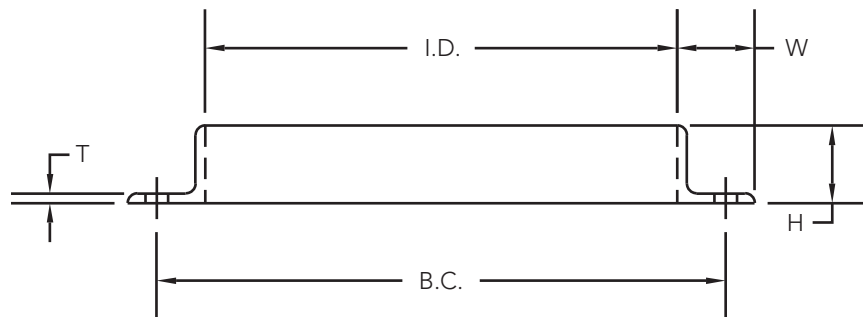


Standard Rolled Angle Rings

Inside Diameter	H	W	T	Bolt Hole Centers	No. of Bolt Holes	Size of Bolt Holes	Weight lbs.	Pieces/Bundle
6 1/8"	1"	1"	1/8"	7 5/16"	6	9/32"	1.25	-
7 1/8"	1"	1"	1/8"	8 5/16"	6	3/8"	1.50	-
8 1/8"	1"	1"	1/8"	9 5/16"	6	3/8"	1.75	-
9 1/8"	1"	1"	1/8"	10 5/16"	6	7/16"	1.88	-
10 1/8"	1 1/2"	1 1/2"	3/16"	11 13/16"	6	7/16"	4.75	24
11 1/8"	1 1/2"	1 1/2"	3/16"	12 3/4"	6	7/16"	5.25	24
12 1/8"	1 1/2"	1 1/2"	3/16"	14"	8	7/16"	5.65	24
13 1/8"	1 1/2"	1 1/2"	3/16"	15"	8	7/16"	6.13	24
14 1/8"	1 1/2"	1 1/2"	3/16"	16"	8	7/16"	6.50	24
15 1/8"	1 1/2"	1 1/2"	3/16"	17"	8	7/16"	7.25	24
16 1/8"	1 1/2"	1 1/2"	3/16"	18"	8	7/16"	8.00	24
17 1/8"	1 1/2"	1 1/2"	3/16"	19"	8	7/16"	8.25	24
18 1/8"	1 1/2"	1 1/2"	3/16"	20"	8	7/16"	8.50	24
19 1/8"	1 1/2"	1 1/2"	3/16"	20 3/4"	12	7/16"	8.75	24
20 1/8"	1 1/2"	1 1/2"	3/16"	21 3/4"	12	7/16"	9.50	24
21 1/8"	1 1/2"	1 1/2"	3/16"	22 3/4"	12	7/16"	10.25	24
22 1/8"	1 1/2"	1 1/2"	3/16"	23 3/4"	12	7/16"	10.75	24
23 1/8"	1 1/2"	1 1/2"	3/16"	24 7/8"	12	7/16"	11.25	24
24 1/8"	1 1/2"	1 1/2"	3/16"	25 7/8"	12	7/16"	11.50	24
25 1/8"	1 1/2"	1 1/2"	3/16"	26 7/8"	16	7/16"	12.00	24
26 1/8"	2"	2"	3/16"	28 3/8"	16	7/16"	16.75	12
27 1/8"	2"	2"	3/16"	29 3/8"	16	7/16"	17.38	12
28 1/8"	2"	2"	3/16"	30 3/8"	16	7/16"	18.00	12
29 1/8"	2"	2"	3/16"	31 3/8"	16	7/16"	18.75	12
30 1/8"	2"	2"	3/16"	32 3/8"	16	7/16"	19.50	12
31 1/8"	2"	2"	3/16"	33 3/8"	16	7/16"	20.38	12
32 1/8"	2"	2"	3/16"	34 3/8"	16	7/16"	20.75	12
33 1/8"	2"	2"	3/16"	35 3/8"	16	7/16"	21.25	12
34 1/8"	2"	2"	3/16"	36 3/8"	16	7/16"	22.00	12
35 1/8"	2"	2"	3/16"	37 3/8"	16	7/16"	22.50	12
36 1/8"	2"	2"	3/16"	38 3/8"	16	7/16"	23.00	12
37 1/8"	2"	2"	3/16"	39 3/8"	24	7/16"	23.75	6
38 1/8"	2"	2"	3/16"	40 3/8"	24	7/16"	24.50	6
39 1/8"	2"	2"	3/16"	41 3/8"	24	7/16"	25.00	6

Standard Rolled Angle Rings

Inside Diameter	H	W	T	Bolt Hole Centers	No. of Bolt Holes	Size of Bolt Holes	Weight lbs.	Pieces/Bundle
40 1/8"	2"	2"	3/16"	42 3/8"	24	7/16"	25.75	6
41 1/8"	2"	2"	3/16"	43 3/8"	24	7/16"	26.13	6
42 1/8"	2"	2"	3/16"	44 3/8"	24	7/16"	26.50	6
43 1/8"	2"	2"	3/16"	45 3/8"	24	7/16"	27.38	6
44 1/8"	2"	2"	3/16"	46 3/8"	24	7/16"	28.00	6
45 1/8"	2"	2"	3/16"	47 3/8"	24	7/16"	28.63	6
46 1/8"	2"	2"	3/16"	48 3/8"	24	7/16"	29.00	6
47 1/8"	2"	2"	3/16"	49 3/8"	24	7/16"	29.88	6
48 1/8"	2"	2"	3/16"	50 3/8"	24	7/16"	30.75	6
49 1/8"	2"	2"	3/16"	51 3/8"	24	7/16"	31.50	6
50 1/8"	2"	2"	3/16"	52 3/8"	24	7/16"	32.00	6
51 1/8"	2"	2"	3/16"	53 3/8"	24	7/16"	32.75	6
52 1/8"	2"	2"	3/16"	54 3/8"	24	7/16"	33.38	6
53 1/8"	2"	2"	3/16"	55 3/8"	24	7/16"	34.00	6
54 1/8"	2"	2"	3/16"	56 3/8"	24	7/16"	34.75	6
55 1/8"	2"	2"	3/16"	57 3/8"	32	7/16"	35.38	6
56 1/8"	2"	2"	3/16"	58 3/8"	32	7/16"	36.00	6
57 1/8"	2"	2"	3/16"	59 3/8"	32	7/16"	36.50	6
58 1/8"	2"	2"	3/16"	60 3/8"	32	7/16"	37.00	6
59 1/8"	2"	2"	3/16"	61 3/8"	32	7/16"	37.75	6
60 1/8"	2"	2"	3/16"	62 3/8"	32	7/16"	38.50	6
61 1/8"	2"	2"	3/16"	63 3/8"	32	7/16"	39.00	6
62 1/8"	2"	2"	3/16"	64 3/8"	32	7/16"	39.75	6
63 1/8"	2"	2"	3/16"	65 3/8"	32	7/16"	40.38	6
64 1/8"	2"	2"	3/16"	66 3/8"	32	7/16"	41.00	6
65 1/8"	2"	2"	3/16"	67 3/8"	32	7/16"	41.75	6
66 1/8"	2"	2"	3/16"	68 3/8"	32	7/16"	42.38	6
67 1/8"	2"	2"	3/16"	69 3/8"	32	7/16"	43.00	6
68 1/8"	2"	2"	3/16"	70 3/8"	32	7/16"	43.50	6
69 1/8"	2"	2"	3/16"	71 3/8"	32	7/16"	44.25	6
70 1/8"	2"	2"	3/16"	72 3/8"	32	7/16"	44.88	6
71 1/8"	2"	2"	3/16"	73 3/8"	32	7/16"	45.50	6
72 1/8"	2"	2"	3/16"	74 3/8"	32	7/16"	46.25	6



ELBOWS

Koger Air One-Piece Galvanized Elbows

- Machines developed by Koger produce one-piece elbows.
- Galvanized steel with tight seams and smooth interiors for quiet, efficient airflow.
- With or without flanges; flanges add to list price.



Elbows			
Diameter	C.L.R.	GA	Weight (lbs.)
90° Long Radius			
3"	7 1/2"	20	2.40
4"	10"	22	4.00
5"	12 1/2"	22	6.00
6"	15"	22	8.00
7"	17 1/2"	22	10.00
8"	20"	22	13.00
9"	22"	20	18.00
10"	25"	20	22.00
11"	27 1/2"	20	26.00
12"	30"	20	33.00
13"	32 1/2"	20	35.00
14"	35"	20	38.00
45° Long Radius			
3"	7 1/2"	20	1.50
4"	10"	22	2.50
5"	12 1/2"	22	3.50
6"	15"	22	4.50
7"	17 1/2"	22	6.00
8"	20"	22	8.00
9"	22 1/2"	20	12.00
10"	25"	20	14.75
11"	27 1/2"	20	16.50
12"	30"	20	18.75
13"	32 1/2"	20	21.00
14"	35"	20	23.50
60° Long Radius			
4"	10"	22	2.90
5"	12 1/2"	22	4.40
6"	15"	22	5.50
7"	17 1/2"	22	6.80
8"	20"	22	9.40
10"	25"	20	16.00
12"	30"	20	22.50
90° Short Radius			
3"	4 1/2"	20	2.00
4"	6"	22	3.50
5"	7 1/2"	22	5.00
6"	9"	22	6.25
7"	10 1/2"	22	7.00
8"	12"	22	9.00
9"	13 1/2"	20	15.00
10"	15"	20	18.00
11"	16 1/2"	20	20.00
12"	18"	20	26.00
13"	19 1/2"	20	29.00
14"	21"	20	31.00

GORED ELBOWS



Standard Gored Elbows

Diameter	C.L.R.	No. Pieces	GA	WT	GA	WT	GA	WT	GA	WT	Diameter
15"	29 1/2"	7	18	35	16	43	14	53	12	73	15"
16"	32"	7	18	54	16	56	14	82	12	113	16"
17"	32 1/2"	7	18	54	16	66	14	82	12	113	17"
18"	33"	7	18	54	16	66	14	82	12	113	18"
19"	33 1/2"	7	18	54	16	66	14	82	12	113	19"
20"	40"	7	18	69	16	85	14	105	12	145	20"
21"	43 1/2"	9	18	78	16	95	14	118	12	156	21"
22"	44"	9	18	86	16	106	14	131	12	180	22"
23"	47 1/2"	9	18	90	16	112	14	138	12	190	23"
24"	48"	9	18	95	16	138	14	170	12	235	24"
25"	48 1/2"	9			16	146	14	180	12	250	25"
26"	52"	9			16	150	14	196	12	272	26"
27"	55 1/2"	9			16	175	14	215	12	295	27"
28"	56"	9			16	185	14	230	12	320	28"
29"	56 1/2"	9			16	200	14	250	12	340	29"
30"	60"	9			16	215	14	265	12	365	30"
31"	60 1/2"	9			16	265	14	330	12	455	31"
32"	64"	9			16	265	14	330	12	455	32"
33"	64 1/2"	9			16	265	14	330	12	455	33"
34"	65"	11			16	265	14	330	12	455	34"
35"	69 1/2"	11					14	360	12	500	35"
36"	72"	11					14	360	12	500	36"
37"	72 1/2"	11					14	360	12	500	37"
38"	73"	11					14	360	12	500	38"
39"	73 1/2"	11					14	475	12	650	39"
40"	74"	11					14	475	12	650	40"
41"	74 1/2"	11					14	475	12	650	41"
42"	75"	11					14	475	12	650	42"
43"	75 1/2"	11					14	475	12	650	43"
44"	76"	11					14	475	12	650	44"
45"	76 1/2"	11					14	660	12	900	45"
46"	77"	11					14	660	12	900	46"
47"	77 1/2"	11					14	660	12	900	47"
48"	78"	11					14	660	12	900	48"
49"	78 1/2"	11					14	660	12	900	49"
50"	79"	11					14	660	12	900	50"

- Available in custom sizes, gauges and materials.
- With or without flanges.
- Priced per customer's specifications.

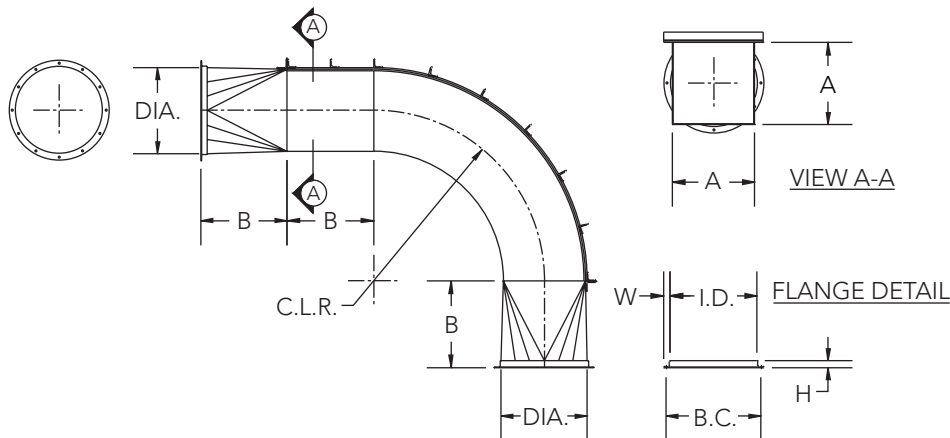
- Ideal for use in areas of heavy abrasion.
- Flanged construction standard.
- Available in custom sizes and materials.
- Priced per customer's specifications.

REPLACEABLE BACK ELBOWS



Standard Heavy-Duty, Replaceable Back Elbows

Diameter	A	B	C.L.R.	Housing Gauge	Sq to Rd Gauge	Wrapper Gauge	ID	H	W	B.C.	No. of Holes	Hole Dia.	WT	Diameter
6"	5"	6"	12"	12	12	10	6 ³ / ₃₂ "	1"	1"	7 ⁵ / ₁₆ "	6	9 ³ / ₃₂ "	80	6"
7"	6"	7"	14"	12	12	10	7 ¹ / ₈ "	1"	1 ¹ / ₈ "	8 ⁵ / ₁₆ "	6	3 ³ / ₈ "	100	7"
8"	7"	8"	16"	12	12	10	8 ¹ / ₈ "	1"	1 ¹ / ₈ "	9 ⁵ / ₁₆ "	6	3 ³ / ₈ "	120	8"
9"	8"	9"	18"	12	12	10	9 ¹ / ₈ "	1 ¹ / ₈ "	1 ¹ / ₄ "	10 ⁵ / ₁₆ "	6	7 ¹ / ₁₆ "	140	9"
10"	9"	10"	20"	12	12	10	10 ¹ / ₈ "	1 ¹ / ₄ "	1 ³ / ₈ "	11 ¹³ / ₁₆ "	6	7 ¹ / ₁₆ "	160	10"
11"	10"	11"	22"	12	12	10	11 ¹ / ₈ "	1 ¹ / ₄ "	1 ³ / ₈ "	12 ³ / ₄ "	6	7 ¹ / ₁₆ "	180	11"
12"	11"	12"	24"	12	12	10	12 ¹ / ₈ "	1 ¹ / ₄ "	1 ¹ / ₂ "	14"	8	7 ¹ / ₁₆ "	200	12"
13"	12"	13"	26"	12	12	10	13 ¹ / ₈ "	1 ¹ / ₂ "	1 ¹ / ₂ "	15"	8	7 ¹ / ₁₆ "	220	13"
14"	13"	14"	28"	12	12	10	14 ¹ / ₈ "	1 ¹ / ₂ "	1 ¹ / ₂ "	16"	8	7 ¹ / ₁₆ "	240	14"
15"	14"	15"	30"	10	12	3 ³ / ₁₆ "	15 ¹ / ₈ "	1 ¹ / ₂ "	1 ¹ / ₂ "	17"	8	7 ¹ / ₁₆ "	300	15"
17"	16"	17"	34"	10	12	3 ³ / ₁₆ "	17 ¹ / ₈ "	1 ¹ / ₂ "	1 ¹ / ₂ "	18"	8	7 ¹ / ₁₆ "	380	17"
19"	18"	19"	38"	10	12	3 ³ / ₁₆ "	19 ¹ / ₈ "	1 ¹ / ₂ "	1 ¹ / ₂ "	20 ³ / ₄ "	12	7 ¹ / ₁₆ "	500	19"
21"	20"	21"	42"	10	12	3 ³ / ₁₆ "	21 ¹ / ₈ "	1 ¹ / ₂ "	1 ¹ / ₂ "	22 ³ / ₄ "	12	7 ¹ / ₁₆ "	550	21"
23"	22"	23"	46"	10	10	1 ¹ / ₄ "	23 ¹ / ₈ "	1 ¹ / ₂ "	1 ¹ / ₂ "	24 ⁷ / ₈ "	12	7 ¹ / ₁₆ "	600	23"
26"	25"	26"	52"	10	10	1 ¹ / ₄ "	26 ¹ / ₈ "	2"	2"	28 ³ / ₈ "	16	7 ¹ / ₁₆ "	1200	26"



STANDARD DIVERTER VALVES



Diverter Valves

- 16-gauge to 10-gauge carbon steel in sizes 8" to 24".
- Manual, pneumatic or electric operated.
- Flanged connections allow easy installation.
- Suitable for both air and material handling systems.
- Available in custom sizes and materials.
- Shop drawings available.
- Not a stock item.
- Options:
 - Removable Side Plates
 - Access Door

BLAST GATES



Blast Gates

- 10-gauge steel in sizes 4" to 24", larger sizes available.
- 4" to 20" manual operated blast gates are normally in stock.
- Manual, pneumatic or electric operated.
- Flanged connections allow easy installation.
- Provides a more positive seal than cut-offs.
- Works efficiently with positive or negative pressure.
- Available in custom sizes and materials.
- Available with square inlets and outlets.
- Shop drawings available.

CUT-OFFS



Cast Aluminum Cut-Offs

- Locking screws permit manual blade adjustment for volume control.
- Total airflow can be shut off for energy conservation.

Diameters Available

Half Cut-Offs	Full Cut-Offs
3"	2"
4"	3"
5"	4"
6"	5"
7"	6"
8"	7"
9"	8"
10"	9"
11"	10"
12"	11"
14"	12"
16"	14"
	16"
	18"
	20"

CLEANOUTS

Cast Aluminum Bolted Curved Cleanouts

Pipe Diameter	Opening Size
6"	4" x 7" oval
8"	4" x 7" oval
10"	4" x 7" oval
12"	4" x 7" oval
14"	4 1/2" x 9" oval
16"	4 1/2" x 9" oval
20"	9" x 18" oval

Cast Aluminum Hinged Curved Cleanouts

Pipe Diameter	Opening Size
6"	4" x 7" oval
8"	4" x 7" oval
10"	4" x 7" oval
12"	4" x 7" oval
14"	4 1/2" x 9" oval
16"	4 1/2" x 9" oval

Flat Cleanouts

Bolted Flat Cleanouts	Hinged Flat Cleanouts*
4 1/2" x 9" oval	4 1/2" x 9" oval
9" x 18" oval	9" x 18" oval

* Quick-opening hinged cleanouts can be used for easy product sampling while system is in operation or for emergency servicing or unplugging.

Round Carbon Steel Cleanouts

Each cleanout has a large opening with easy opening, locking latch, and positive seal.

Round Carbon Steel Cleanouts

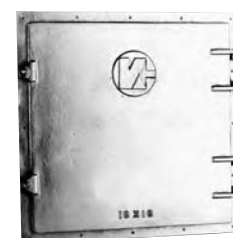
Opening Size	Overall Height	Weight (lbs.)
10" O.D.	4 5/16	14
12" O.D.	4 5/16	17



ACCESS DOORS

Square Cast Aluminum Access Door

- 18" x 18" hinged.



FITTINGS



Tee On Tapers

The most widely used branch fittings in the blowpipe industry. 90° to 15°, with or without angle rings.

- Tee on pipe – 15° to 90°, with or without angle rings.
- Tees to fit pipe – 15° to 90°, with or without angle rings.
- Y Branches.
- Taper Joints – on center or offset.
- Custom Manifolds.
- Made to order in custom sizes and gauges in galvanized steel or hot rolled and stainless steel.
- Priced per customer's specifications.

Transitions

- A streamlined change from rectangle to round.
- Used for equipment connections at fan discharge outlets, collector inlets, etc.
- Furnished with or without flanged construction on both ends.
- Available on center, offset or double offset.

Support Bands

Two-piece pipe support hanger bands separate for easy installation and are secured with heavy-duty bolts. Available in rolled flat bar or angle iron.

Bands are priced per customer's specifications and are also made to order in custom sizes and materials.

Standard Galvanized Steel Pipe

Galvanized steel with riveted and soldered or welded seams with smooth interiors for quiet, efficient airflow, and large and small ends to facilitate lapping joints. Angle flanges can be furnished for field bolting.

Standard pipe is made in 4" to 60" diameters from 20 to 12 gauge, in 3' sections up to 11" in diameter and in 4' sections for 12" diameters and above.

All pipe is priced per customer's specifications and is also made to order in custom sizes and materials, including Mild Steel and Stainless. Larger sizes up to $\frac{3}{16}$ " thickness.

TD-HS Flexible Rubber Hose

Two-ply vinyl coated polyester over wire with scuff strips (black with orange strips). Temperature range - 40° to 200°. 3" to 12". Call for pricing.

620-WD Heavy-Duty Flexible Rubber Hose

One layer of black rubber over wire, abrasion resistant and lightweight. It is designed for more abrasive material handling, wood chips and sawdust and rated to 220°F. 3" to 12". Call for pricing.

RUBBER FLEX HOSE



Standard Floor Sweeps

- Installed near machines in areas not serviced by dust collection system.
- Tight-fitting door prevents air loss when floor sweep is not in use.
- 4" to 6", 16 gauge. Call for pricing.
- Made to order in custom size connections.
- With or without angle ring.

STANDARD FLOOR SWEEPS



Spun Steel Ball Joints

- 3" to 14".
- Call for pricing.

BALL JOINTS



Heavy-Duty Tubing Elbows

- Available in sizes 3" to 10".
- With or without angle rings.
- Call for pricing.

HEAVY-DUTY TUBING ELBOWS

